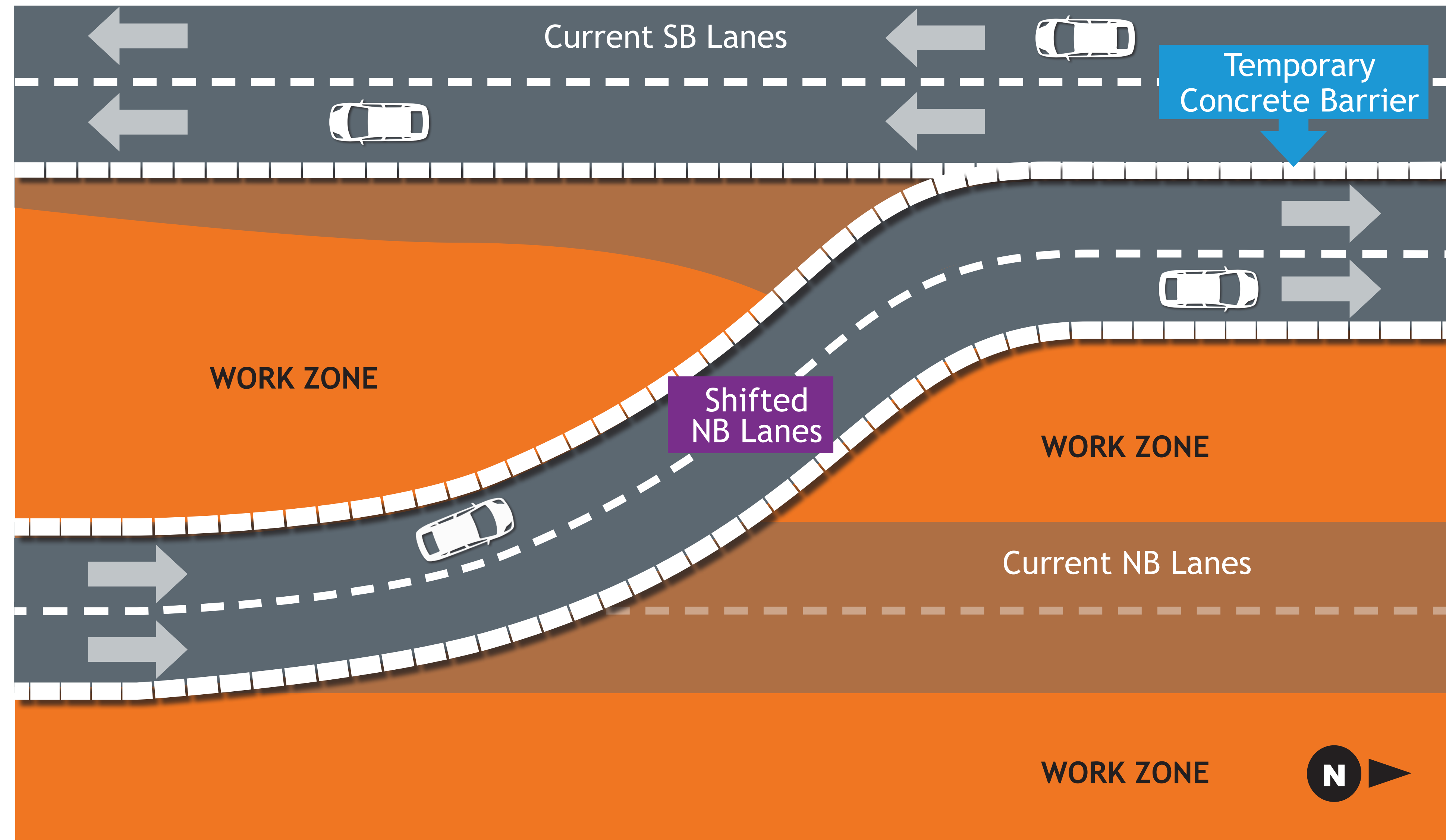
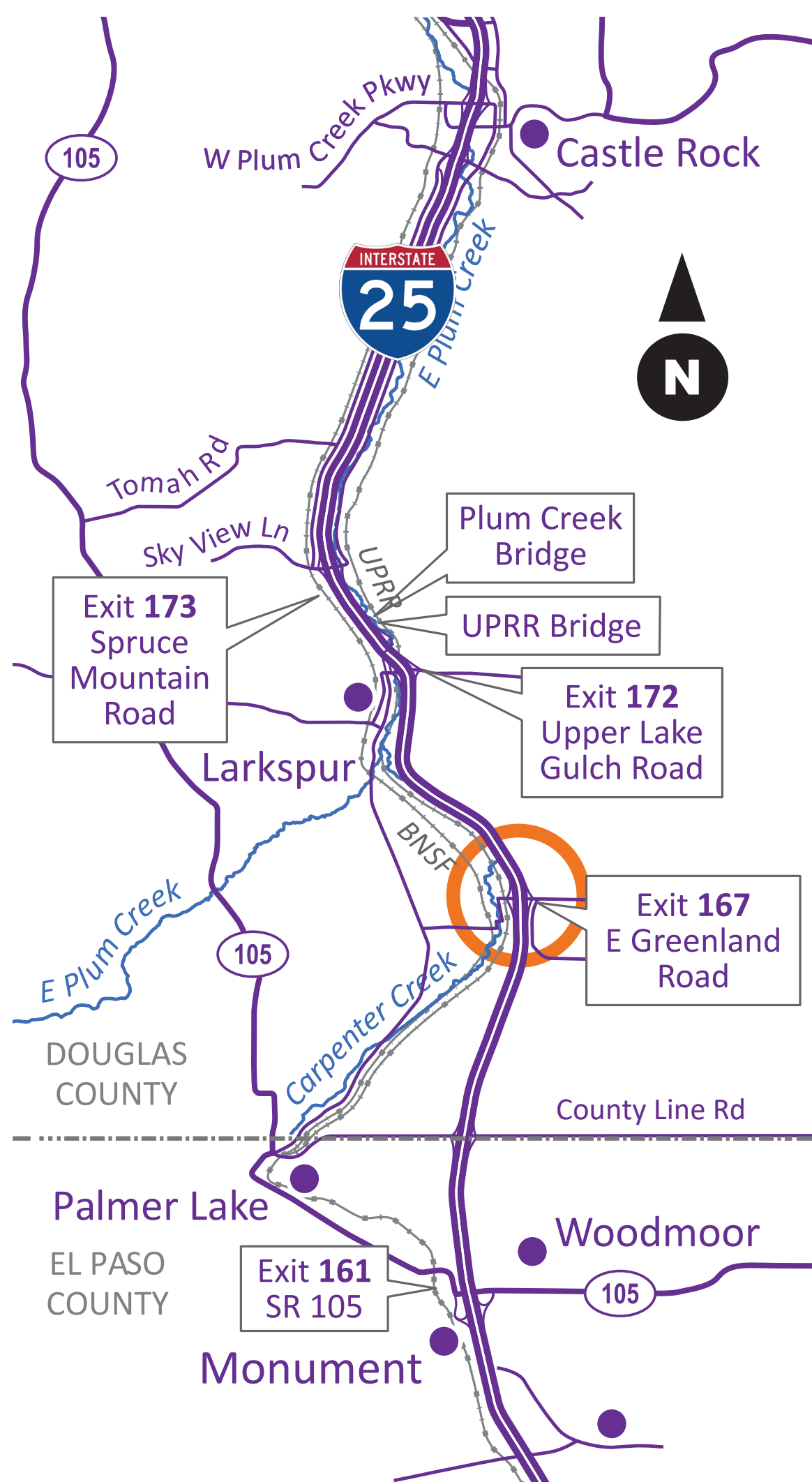




I-25 South Gap Project Monument–Castle Rock

South Section : Phase 1 *Greenland Crossover*



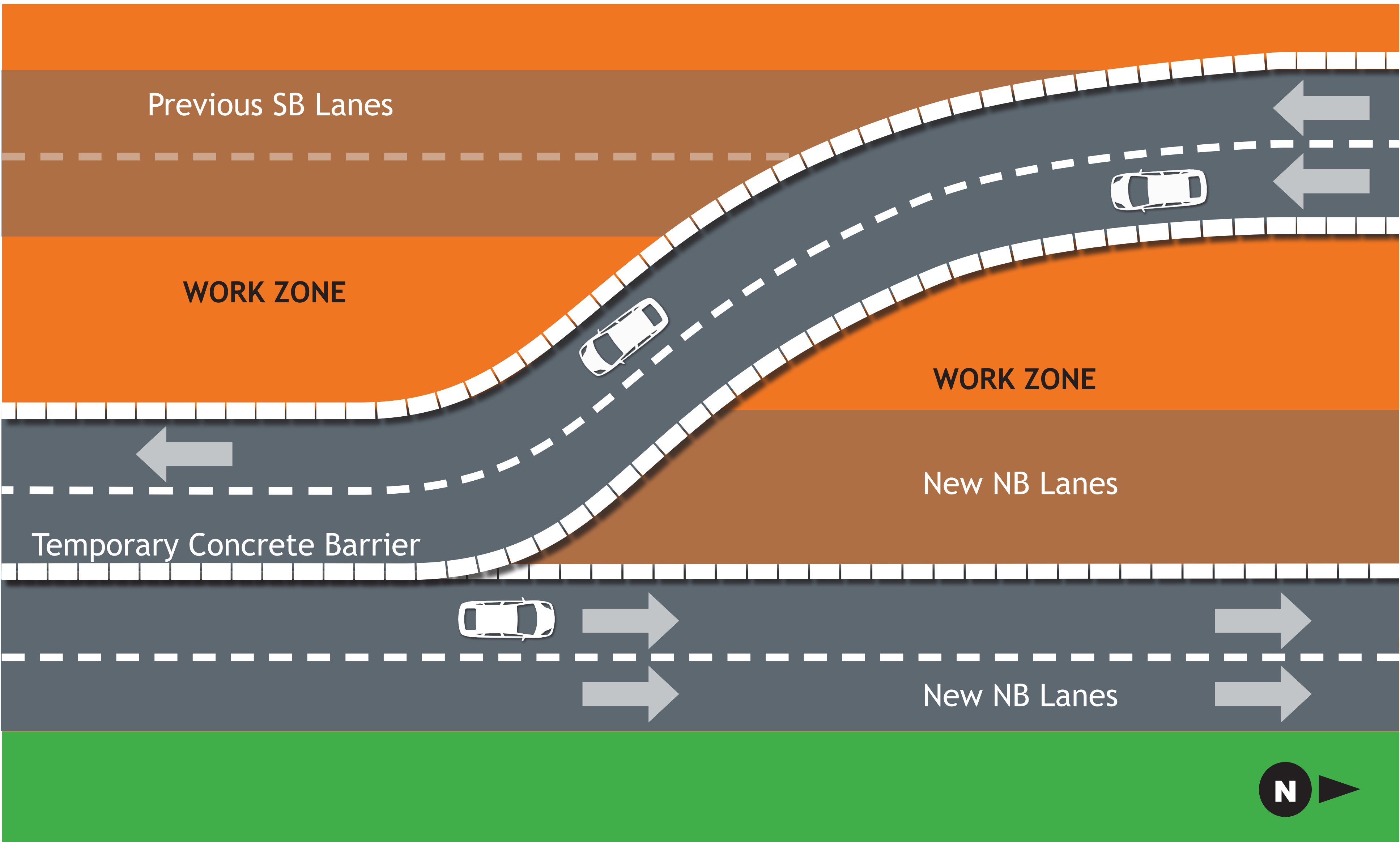
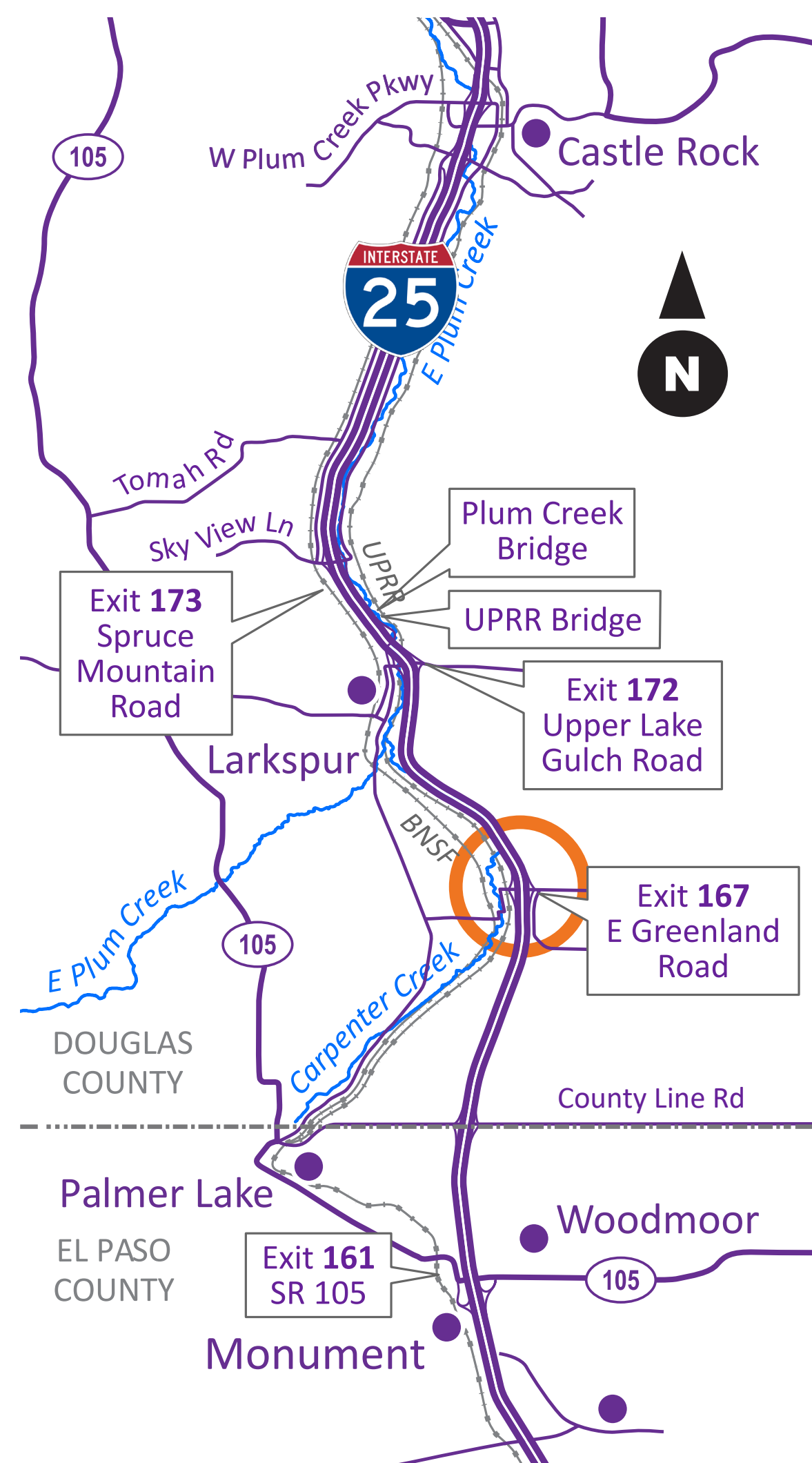
- Construction Activities**
- Construct temporary pavement for crossovers
 - Construct temporary NB on/off ramps
 - Shift NB traffic onto SB and temporary pavement
 - Construct NB portion of Greenland Bridge and wildlife crossing at MP 167.7
 - NB earthwork and asphalt
 - Storm sewer pipe





I-25 South Gap Project Monument–Castle Rock

South Section : Phase 2 *Greenland Crossover*



- Construction Activities**
- Construct temporary pavement for crossovers
 - Construct temporary SB off ramp
 - Shift SB traffic onto newly constructed NB lanes
 - Construct SB portion of Greenland Bridge and wildlife crossing at MP 167.7
 - SB earthwork and asphalt
 - Storm sewer pipe
 - Extended closures of SB on/off ramps

